



Main at Locust Pharmacy
-Since 1962-



Medication Management

Presented by
Dr. Tracy Tran, PharmD





Presentation Outline

- The Most Common Drug Therapy Problems >
- What is Medication Adherence >
- How Pharmacies Can Help >
- Maintaining Open Communication >
- Familiarize with Available Resources >
- Questions & Answers >





Drug Therapy Problems

INDICATION



Unnecessary Drug Therapy
Additional Drug Therapy Needed

EFFECTIVENESS



Ineffective Drug
Dosage too Low

SAFETY



Adverse Drug Reaction
Dosage too High

ADHERENCE



Non-Adherence or Noncompliance





Drug Therapy Problems

INDICATION



Unnecessary Drug Therapy***

Additional Drug Therapy Needed

EFFECTIVENESS



Ineffective Drug

Dosage too Low

SAFETY



Adverse Drug Reaction***

Dosage too High

ADHERENCE



Non-Adherence or Noncompliance***





What is good adherence?



PDC

General goal of >80%

May be higher in specific populations

Maintaining a high PDC correlates to:

- **Better Health Outcomes**
- **Reduced Hospitalizations**
- **Effective control of chronic conditions**





What Factors Affect Adherence?



Helpful At-Home Tips





How we can help increase adherence →

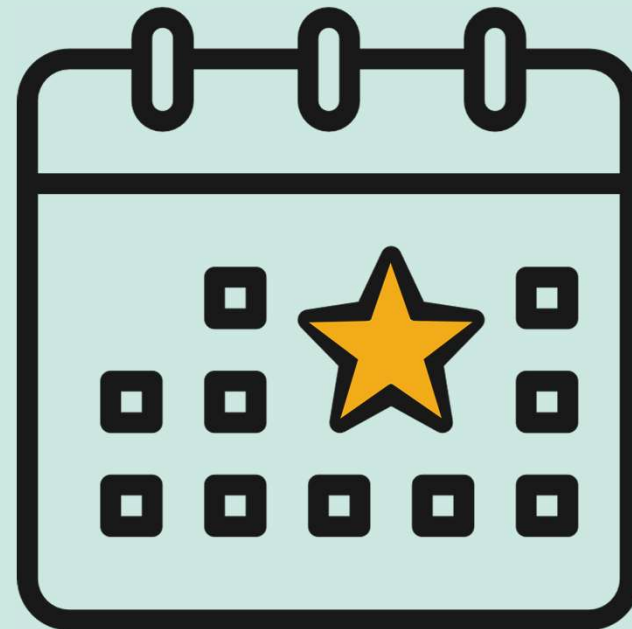
Enroll in a Medication Synchronization Program

ALSO KNOWN AS AUTOMATIC FILL



The Benefits of Med Sync

- Provides flexibility in planning ahead
- Reduces the number of calls for refills
- Allows fewer trips to the pharmacy
(maybe none)
- Improves medication adherence!





NEXT

Med Packaging Options:

01

STANDARD VIALS



02

PARATA PACKS

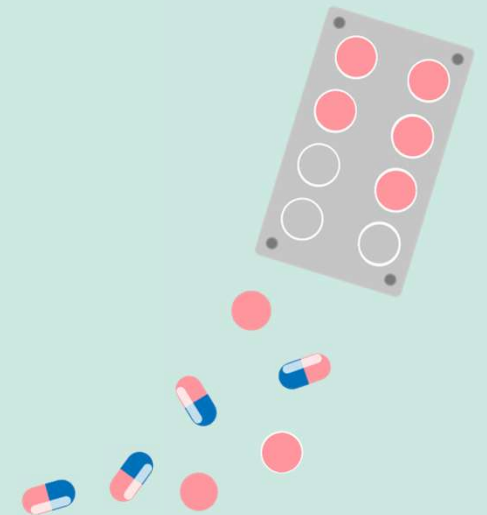


03

BUBBLE PACKS



Maintaining Open Communication





Keep an Updated Med List

- Enables open communication between different providers and pharmacies
 - Helps patients and families keep track of current medications
 - Reduces the risk of overprescribing and drug-drug interactions
 - Something to have on hand in case of emergencies
-





Over-the-Counter (OTC) Products

Make sure to notify the doctors if the patient takes any OTC items, including:

- Common Oral Medications
- Supplements***
- Topical Products
- Eye Drops
- Nasal sprays

When in doubt, ask your doctor or pharmacist!

***Supplements are not FDA-regulated before going onto the market

Example of Patient's Medication List



Pat Simons

DOB: 01/01/1960

Atorvastatin 40 mg Tablets

Take one tablet by mouth at bedtime

High Cholesterol



Dr. Hart (Primary)

555-555-5555

Gabapentin 300 mg Capsules

Take 2 capsules by mouth twice daily

Nerve Pain



Dr. Hart

(Primary)
555-555-5555

Levothyroxine 50 mcg Tablets

Take one tablet by mouth daily

Hypothyroidis



Dr. Mona

(Endocrine)
777-777-7777

Metformin ER 500 mg tablets

Take 2 tablets by mouth twice daily

Diabetes



with food

Dr. Mona (Endocrine)

777-777-7777

Over-the-Counter

Allegra 24-Hr Relief (fexofenadine) 180 mg

Pataday (olopatadine) 0.7% Eye Drops

Tylenol Extra Strength 500 mg Tablets
(acetaminophen)

Taking 1 tablet daily

Using 1 drop in each eye daily

Taking as needed only

Allergies

Allergies

Muscle Pain



Regular Check-Ups

*Maintain Routine or Follow-up
Appointments with the Doctor for:*

- Refill Requests
- Dose Changes
- New Therapies
- Labwork/Health Screenings

*Monitor and consult with your healthcare
provider about any of the following:*

- New Signs/Symptoms
- Side Effects
- Changes in Physical or Mental Health





Advocate for the Patient - Questions to Ask

INDICATION



What is this medication used for?
What other options are there?

EFFECTIVENESS



How soon will this medication take to work?
How to monitor if the medication is working?

SAFETY



What side effects should I expect or be concerned about?

ADHERENCE



How should I take this medication?
What to do if a dose is missed?





Resources for Caregivers/Patients



[CDC . GOV](https://www.cdc.gov)
Has General Health Topics and the Latest Immunization Recommendations



[DRUG MONOGRAPHS](#)
Can be given by pharmacies with new prescriptions or found online



[PILL IDENTIFIERS](#)
Helpful tool to identify unknown prescription medications



[NARCAN](#)
Naloxone is a life-saving opioid reversal agent



[MAYO CLINIC](#)
Has plenty of resources, such as Symptom Checker, Health Screenings by Age, and Disease Overview and Supplements

There are many more! Just make sure it is a trustworthy source...

Questions & Answers





Our Contact Information

Feel free to reach out for questions!

PHONE NUMBER

563-324-1641

EMAIL ADDRESS

ttran@mainatlocust.com

WEBSITE

mainatlocust.com



November Health Awareness Observances

National Diabetes Month

National COPD Awareness Month

Lung Cancer Awareness Month

Pancreatic Cancer Awareness Month

